

Trojan Helmet Pattern

by Tetra Variations

Cut Fold Glue

and you have a
Trojan Helmet!

Size: Child
Difficulty: ★★☆☆☆
Pages: 9



Quick start available at end of instructions

Sizing

To determine which size to use, measure the circumference of your head just above the eyebrows. If the length is greater than 20 in. (51 cm), use the adult size. If the length is less, use the child size.

If the mask is too small after building, try cutting a slit in the back or lengthening one included in the design. If too large or loose, you can try padding the insides with foam or cloth or building a headband from this guide:

<http://tetravariations.com/headband/>

What You'll Need

- **Paper or Building Material**
I suggest 110lb (200 gsm) or 65lb (175 gsm) card stock, size US Letter or A4.
You can also print to regular paper and glue the pages to stiff materials like old manila folders or cereal boxes or trace the pattern onto them.
It's possible to build using corrugated cardboard, though it's challenging to get the folds straight (a straight-edge helps), and tab-less building must be used (see [Tips](#))
- **Access to a Printer**
Most home and office printers work fine
- **Adhesive**
Glue creates a stronger and neater bond, but is a slightly slower process. For glue, I recommend Tacky Glue, though any non-toxic glue can work well. Some glue sticks work well; others have weak bonds.
Tape can be faster, though less neat and difficult in tight spaces. For tape, I recommend anything intended as a long-term bond. Avoid cheap invisible tape or masking tape as they loosen easily.
- **Cutting Tools**
Scissors and/or Craft (X-Acto) knife
- **Other**
Cutting surface (mat or old cardboard)
Ruler or straight-edge

Printing

These templates have small borders that some PDF readers shrink. Be sure that you're printing actual size. Look for something like:

- Page Scaling: None
- Scale: 100%
- Shrink to Fit Page (unchecked)
- Size: Actual Size

You may want to check for supplementary instructions on each page of the pattern before printing, particularly if you're planning on using multiple colors of paper.

Cutting

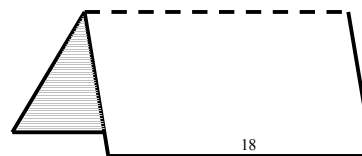
Cut the solid lines using scissors or a craft knife.

Cut out pieces no more than one to two pages at a time so there aren't too many to sort through. The pieces are labelled by letter and will generally be assembled alphabetically: A, B, C1, C2, D, E1, E2... Y, Z, AA, AB, AC, etc.

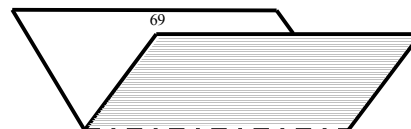
Folding

Before folding, score the fold lines by lightly sliding a craft knife across them or by running over them with a blunt point like an old ball-point pen. This helps keep the folds straight. It helps to use a straight-edge for this.

Mountain-fold the dashed lines: (number shown is only for reference)

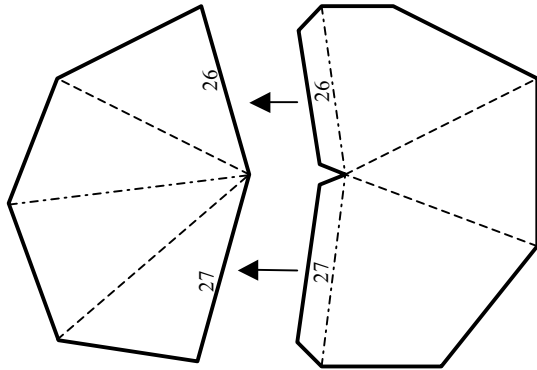


Valley-fold the dot-dash lines:



Gluing/Taping

Glue or tape the tabs to the edge with the matching number. Glue will go on the unmarked side so that the tabs and printed portion will go together on the inside of the completed project.



The numbers do not need to go in order. You'll very likely not find edge/tab #1 until you're part-way through the project.

If using tape, it may look cleaner to tape on the inside, but it is often more stable to tape on the outside. For some joints, it may be best to tape both sides for stability.

If using glue, you need only a thin smear across the tab to adhere well. Too much can warp the paper, leak onto the outside and leave marks, or cause weak bonding. You may find it useful to use a toothpick to smear the glue onto the tabs, though many find this to take too much time.

Tips

Advanced builders may find it easier to score the reverse side of valley-fold lines. This makes the folding action easier, but it is difficult to make mistakes, so work carefully.

Tab-less building is a faster, though less stable way to build. When cutting pieces, leave off the tabs. Then join the matching edges using tape. Be careful, as this removes the tab numbers, so you must look carefully to find matching edges.

Many people find cutting faster and easier using just the craft knife. Your mileage may vary.

Most pages have an image showing what the project should look like after completing the pieces on that sheet. Use this as a guide to help you along the way. Please note that some images may be left-right reversed, depending on your building methods.

Don't forget the tips from the sizing section if you need a better fit. Lengthen the slit, pad the insides, create a headband. Here's that link again, if you need:

<http://tetravariations.com/headband/>

Finishing Touches

Different colored paper in the same project can create amazing results. Some patterns are designed with this intentionally. Others may require you to reprint pages on different colors. Check the guide images and supplementary instructions on each page to get an idea if this will work for the pattern you're building.

I haven't found a paint yet that won't work fairly well with these patterns. Spray paint, tempera, watercolor, even old oil-based house paint have all worked. Just be careful not to wet the paper too much.

Previous builders have embellished their projects using paper mache (go slowly and use small amounts of water), liquid latex, fiberglass resin, and other techniques. Decorate however you like!

More Questions?

Check the FAQ:

<http://www.tetravariations.com/FAQ>

If that doesn't work, ask me direct:

<http://www.tetravariations.com/contact/>

or

matthew@tetravariations.com

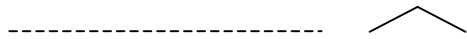
Quick Start

Print actual size. No scaling.

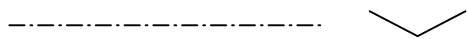
Cut out pieces along the solid lines. Finish one piece at a time rather than cutting everything out at once.

Score the fold-lines.

Mountain-fold the dashed lines.



Valley-fold the dot-dash lines.



Glue or tape the tabs (glue goes on the unmarked side) to the edge with the matching number. The tabs and printed portion go on the inside of the project. Follow the order of pieces as they're laid out.

Join In

You can submit photos to our blog and potentially be featured:

<http://MisterT-Rex.Tumblr.com/>

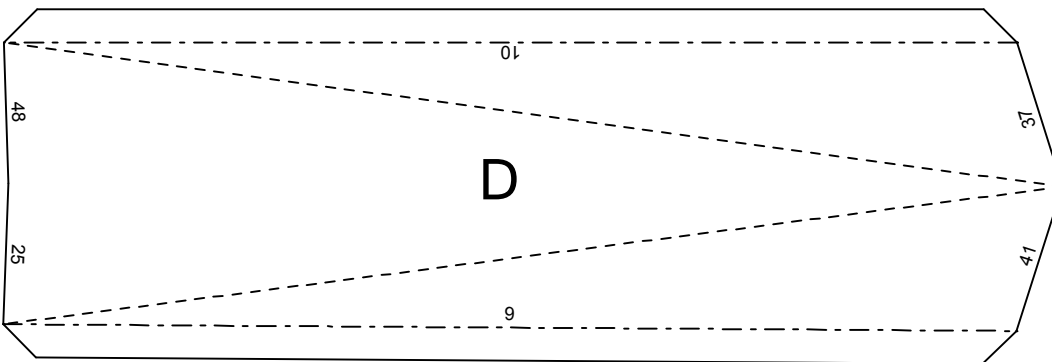
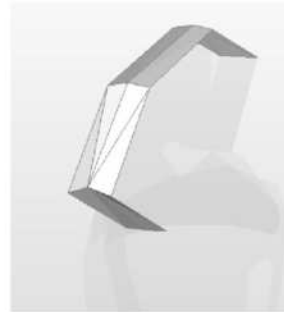
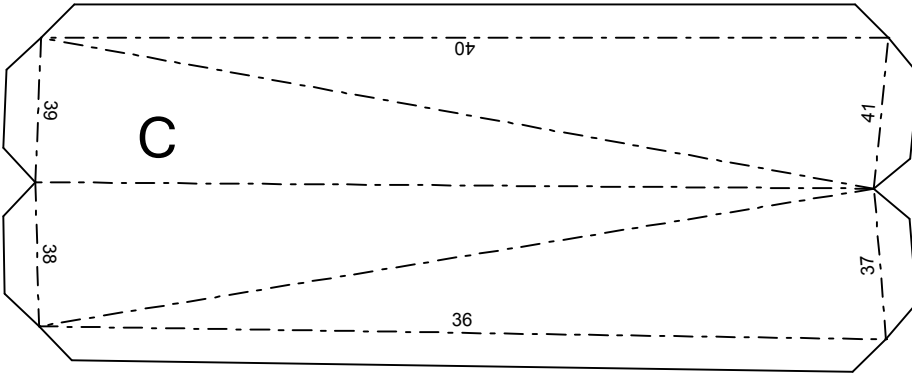
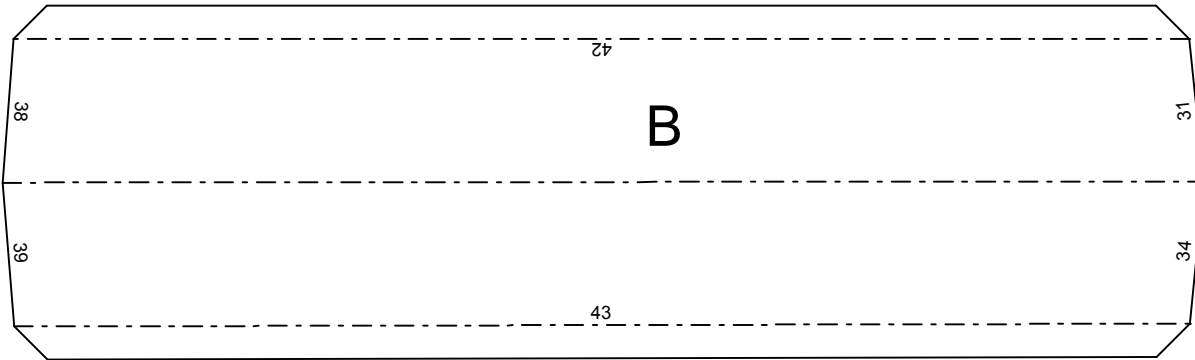
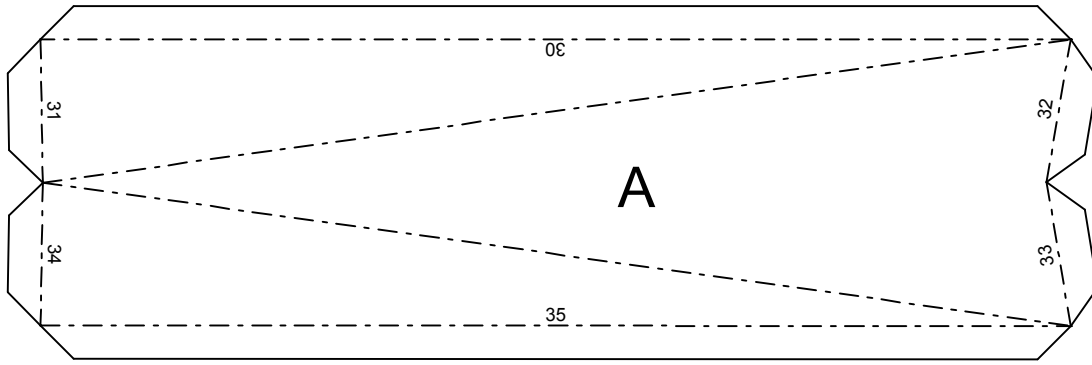
You can also tag your photos #TetraVariations on Twitter or Instagram to share with the community.

Find me on Twitter, Instagram, and Facebook: [@TetraVariations](#)



License

- You may make copies of the patterns for personal or educational use; no commercial use is permitted without written permission from Tetra Variations. We're usually pretty happy to give permission if it's a one-off kind of thing and you give us credit, so go ahead and ask. We're really nice, we promise.
- Public or large-scale distribution of patterns by digital or physical means is prohibited. So don't post this on the internet, please; we beg of you. We're not exactly making bank here, so it's tough to lose that income.
- Purchase of patterns does not constitute transfer of ownership or rights to the patterns. It's mine, it's all mine, my precious!
- Tetra Variations is not liable for injuries or property damage sustained when following any advice or instructions. Please be responsible when using scissors, knives, glue, electrical components, or other tools for construction, and follow all reasonable safety precautions. We'd hate to hear that you'd hurt yourself building something. Unless it's a really minor and sort of silly injury and you laugh it off and post it on Youtube. Then we'd definitely watch that.



Trojan Helmet Pattern

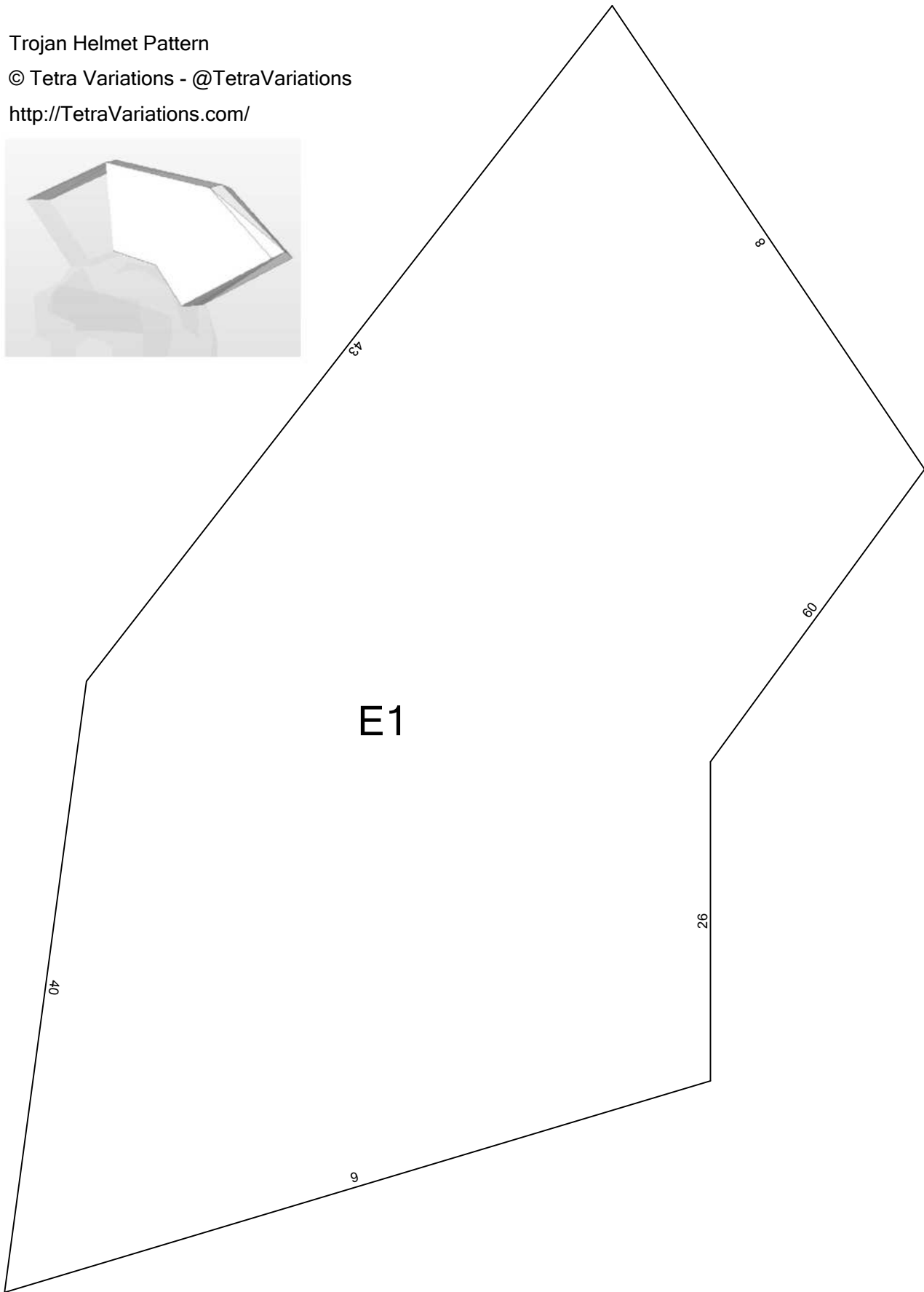
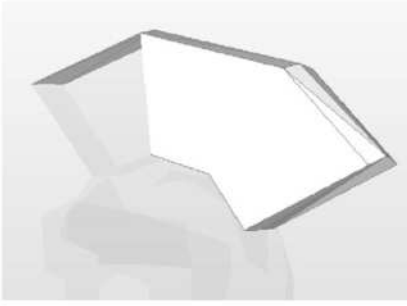
© Tetra Variations - @TetraVariations

<http://TetraVariations.com/>

Trojan Helmet Pattern

© Tetra Variations - @TetraVariations

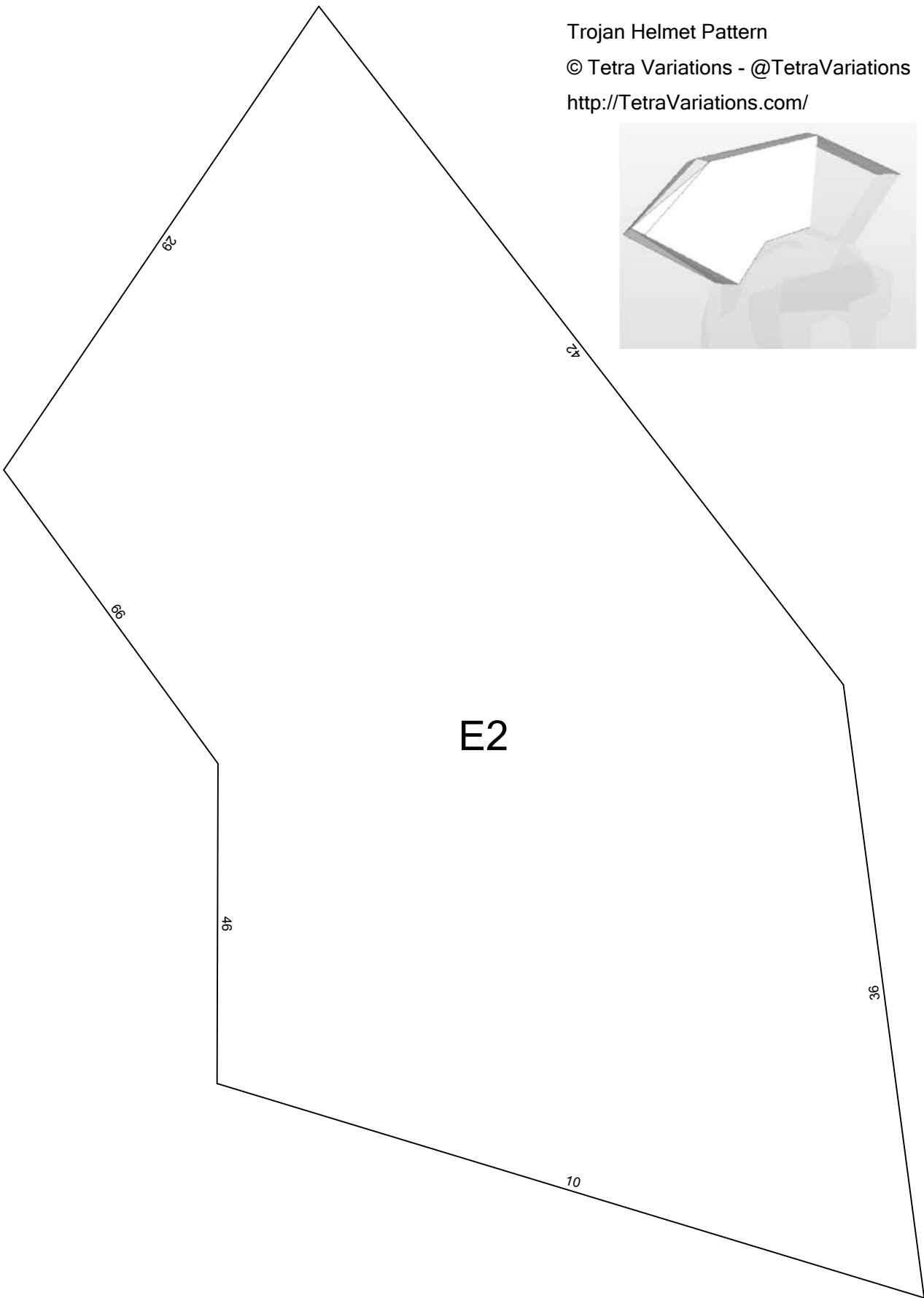
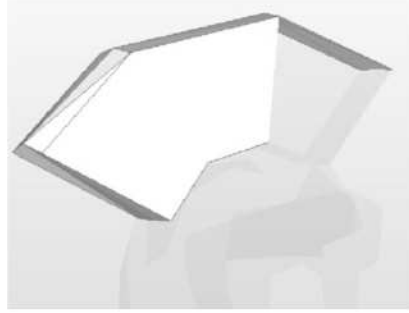
<http://TetraVariations.com/>

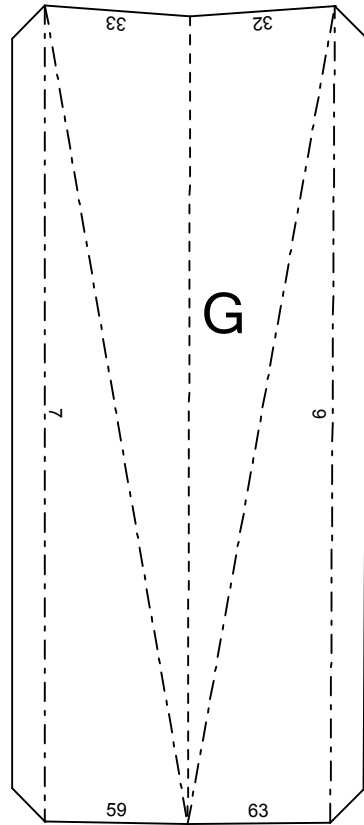
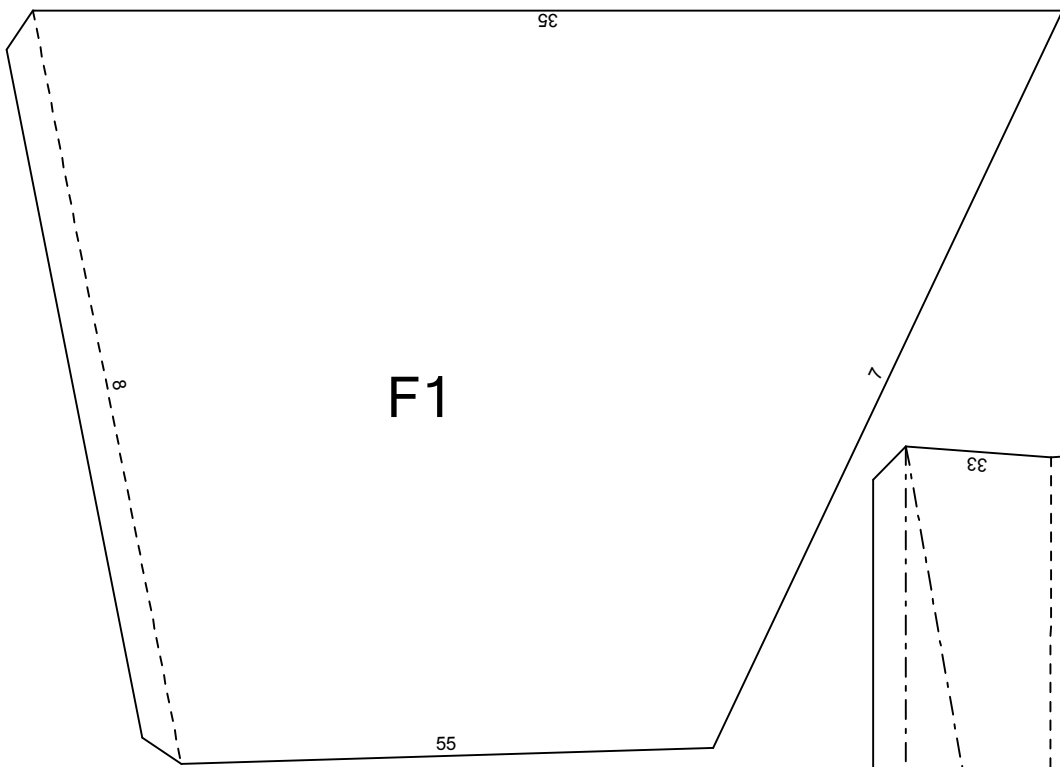


Trojan Helmet Pattern

© Tetra Variations - @TetraVariations

<http://TetraVariations.com/>

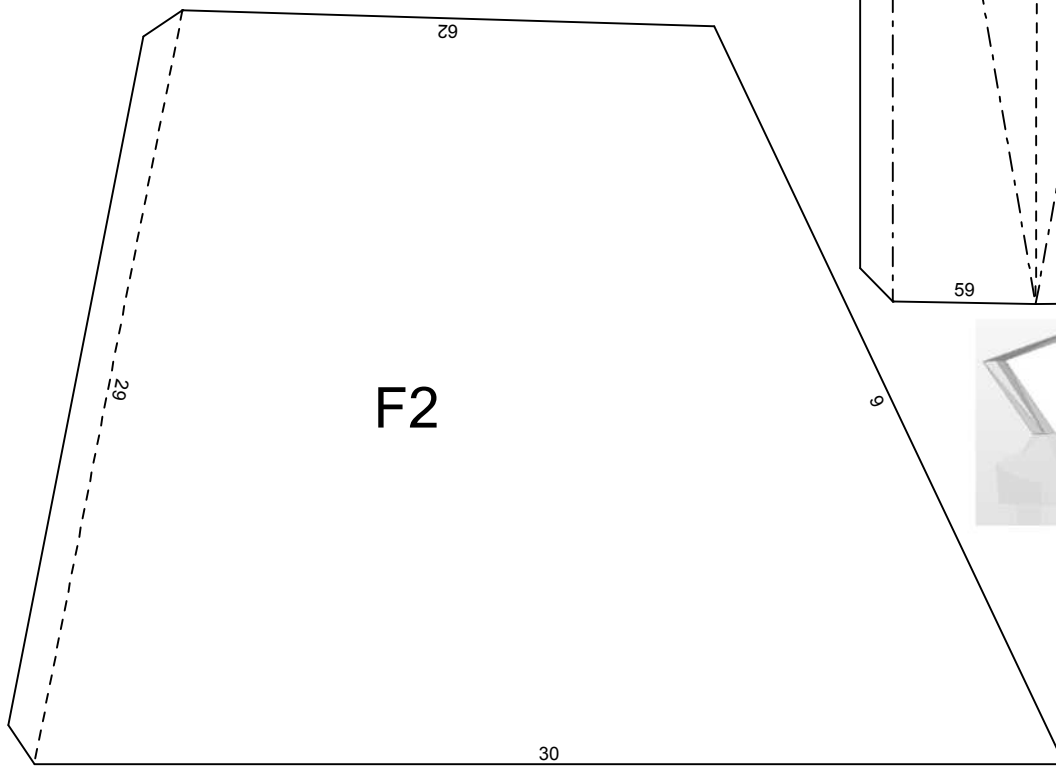


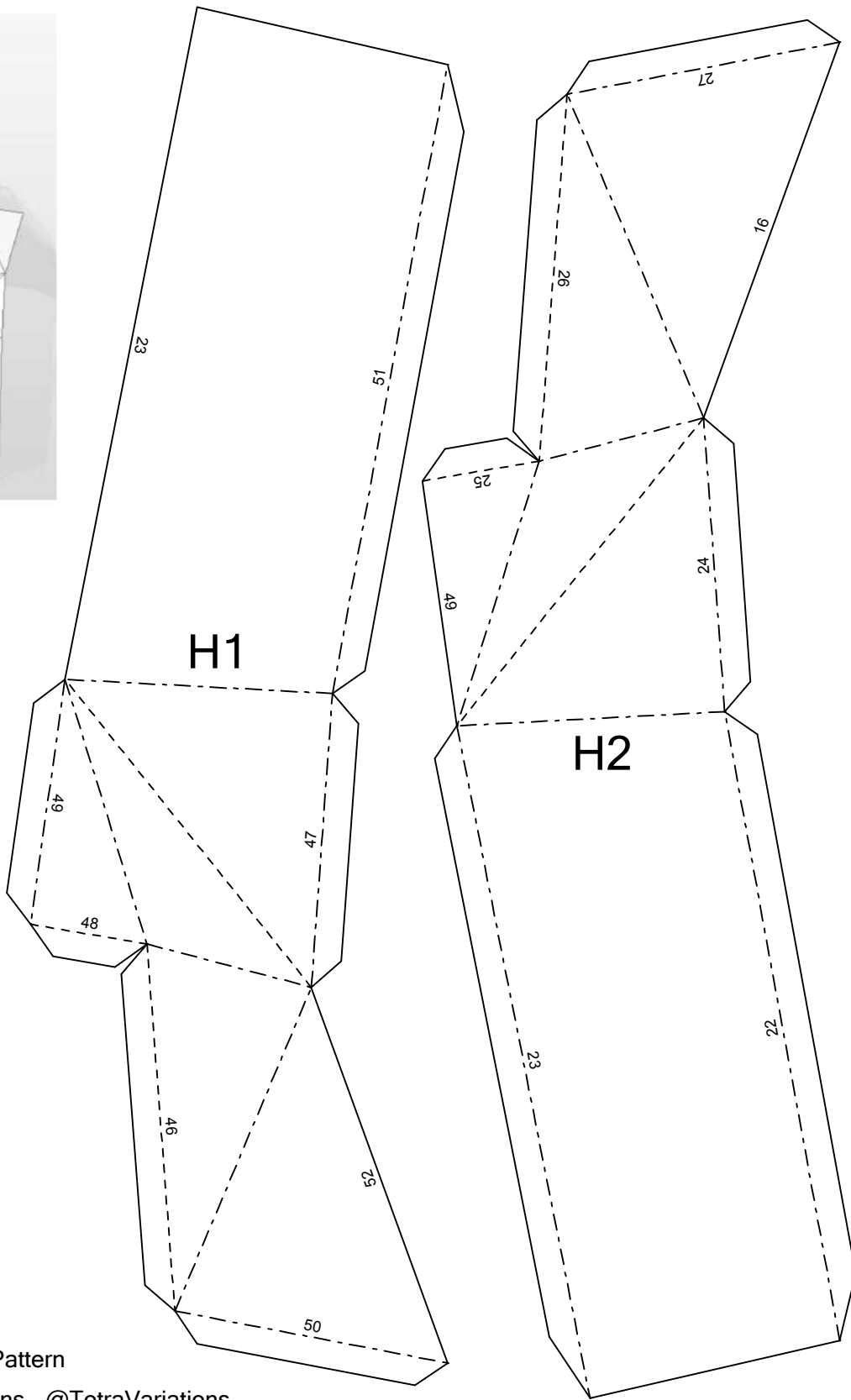
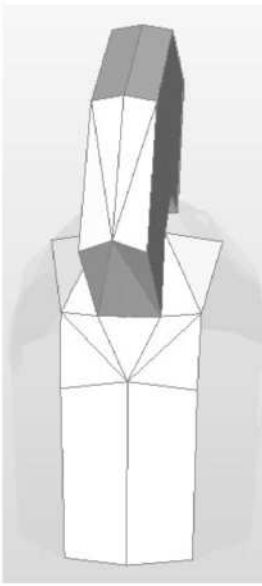


Trojan Helmet Pattern

© Tetra Variations - @TetraVariations

<http://TetraVariations.com/>

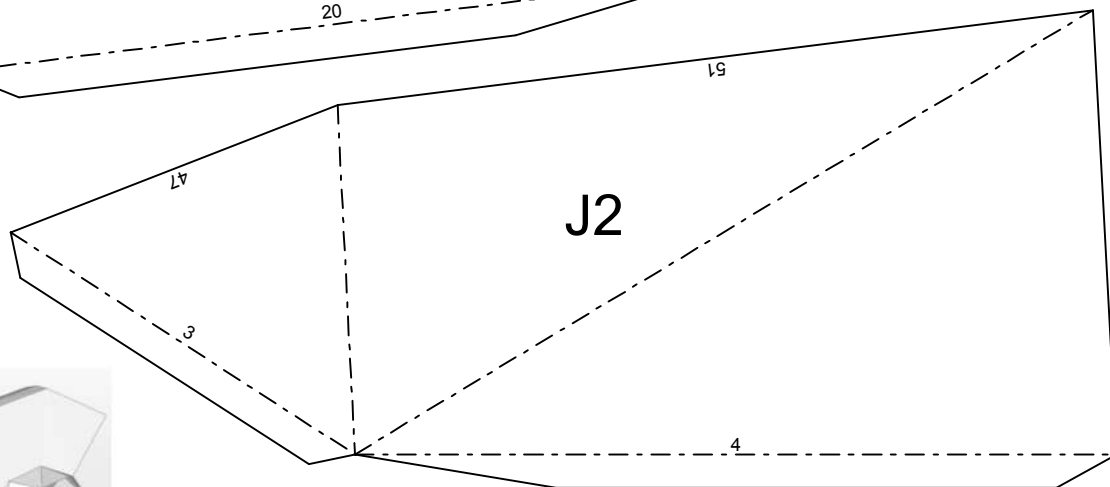
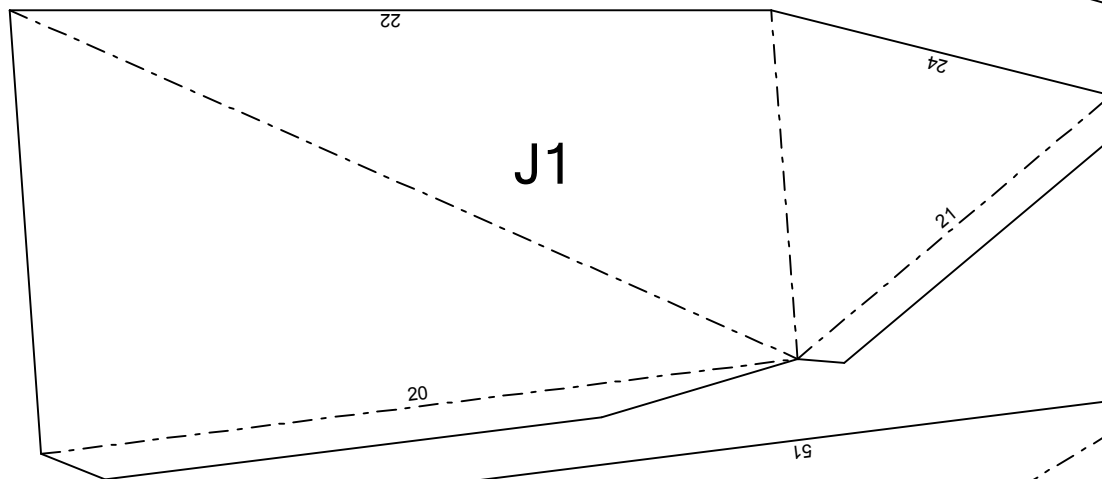
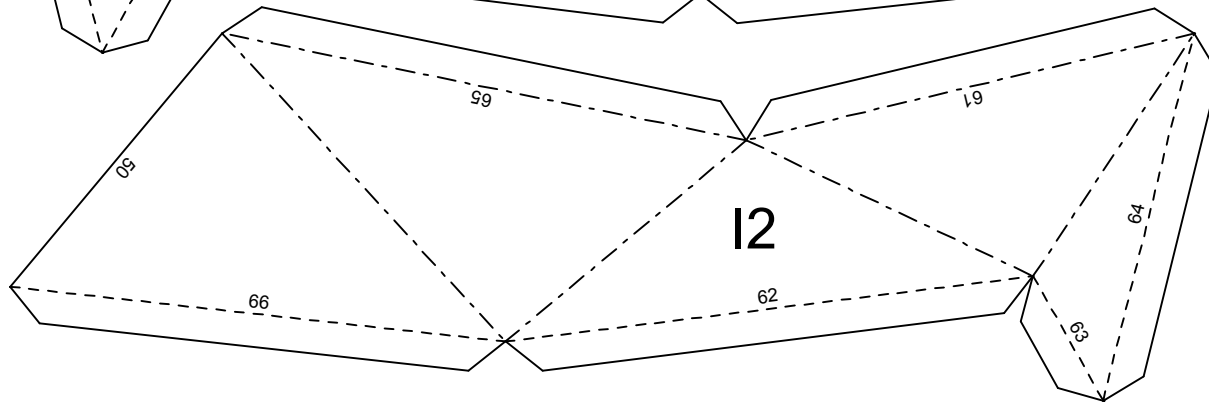
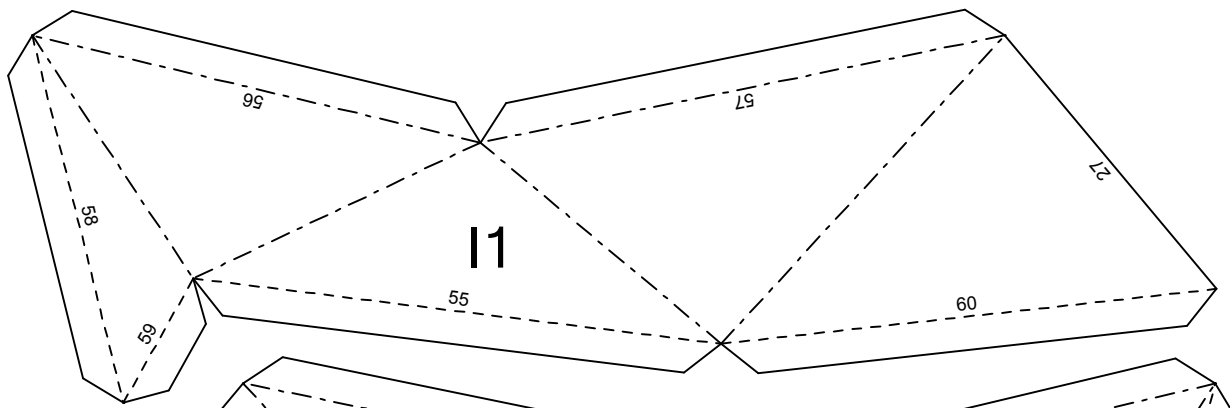




Trojan Helmet Pattern

© Tetra Variations - @TetraVariations

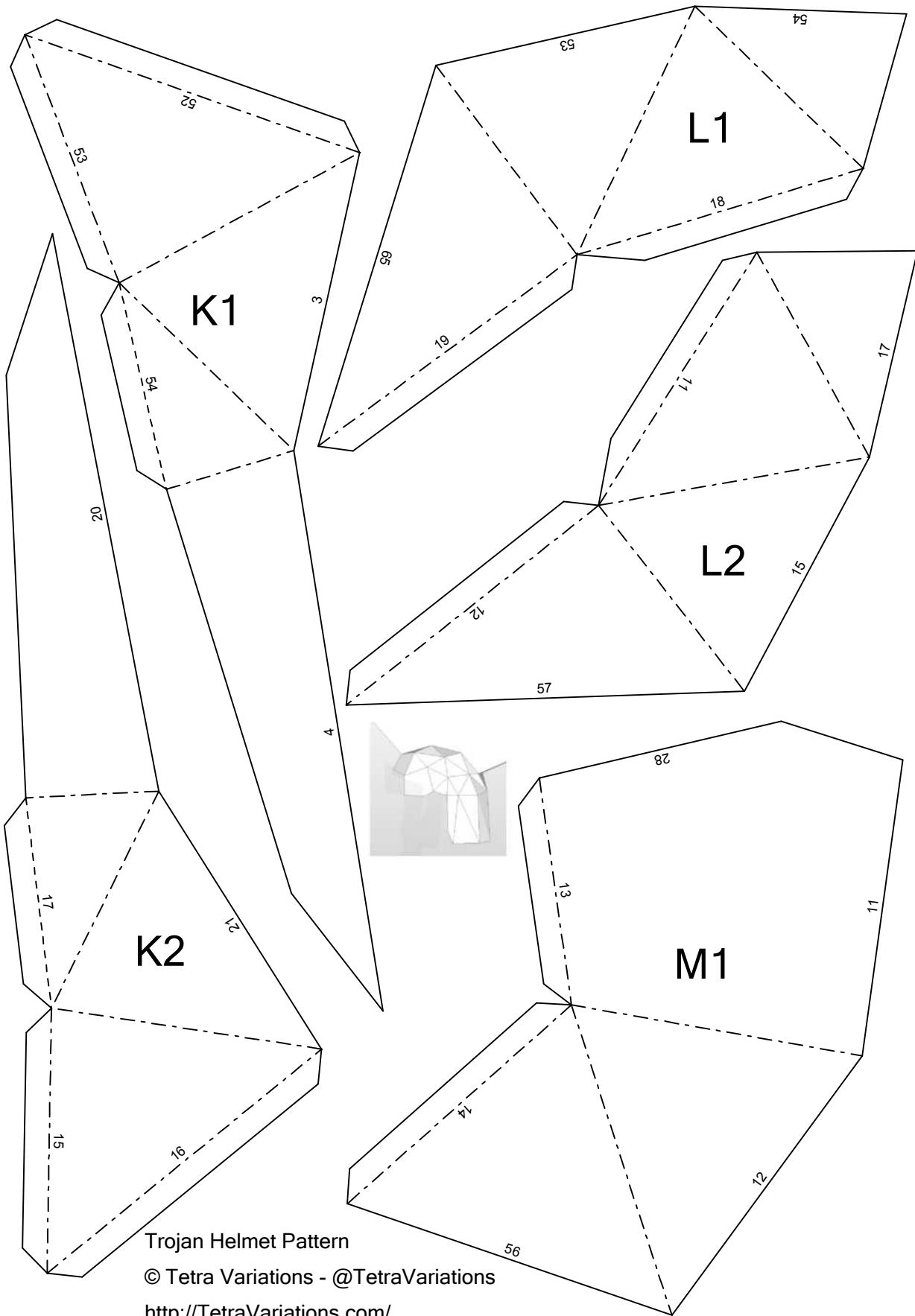
<http://TetraVariations.com/>



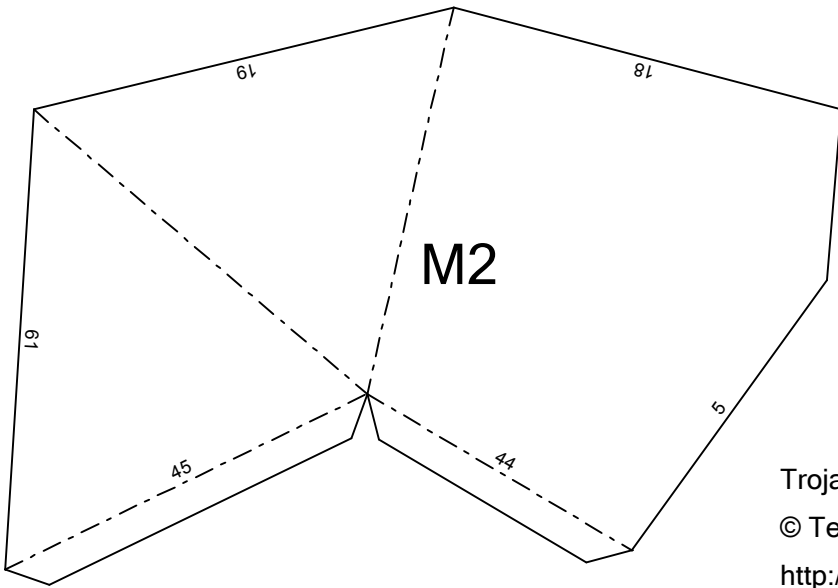
Trojan Helmet Pattern

© Tetra Variations - @TetraVariations

<http://TetraVariations.com/>



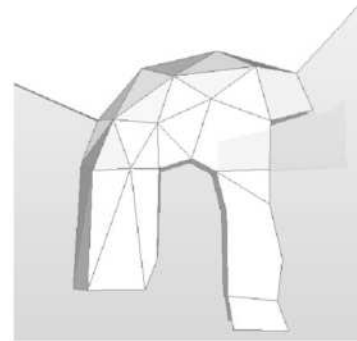
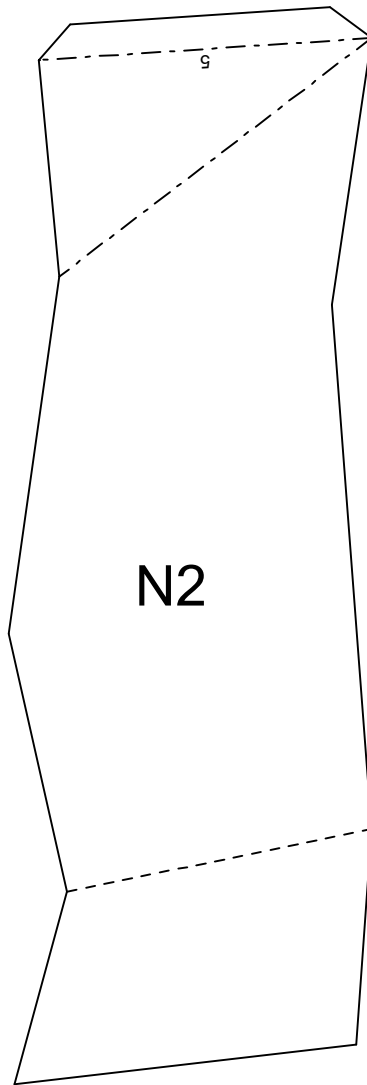
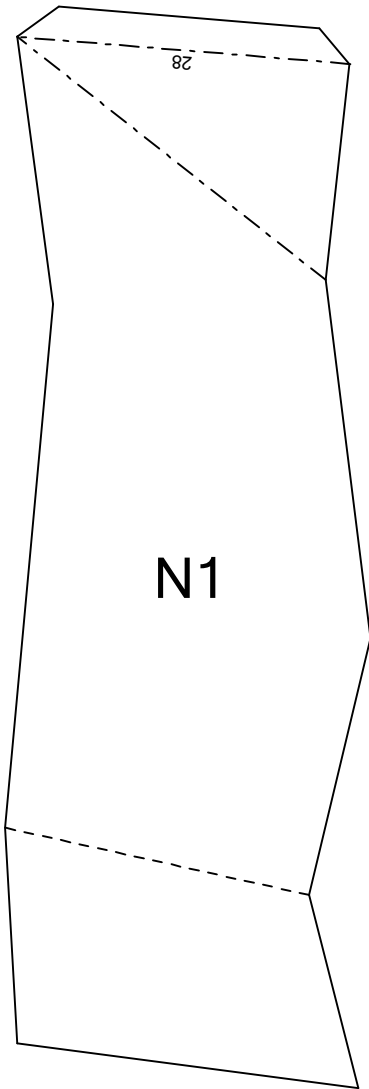
Trojan Helmet Pattern
© Tetra Variations - @TetraVariations
<http://TetraVariations.com/>

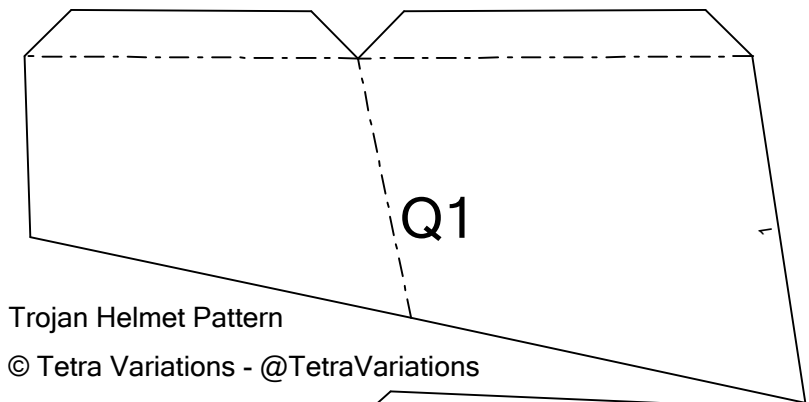


Trojan Helmet Pattern

© Tetra Variations - @TetraVariations

<http://TetraVariations.com/>



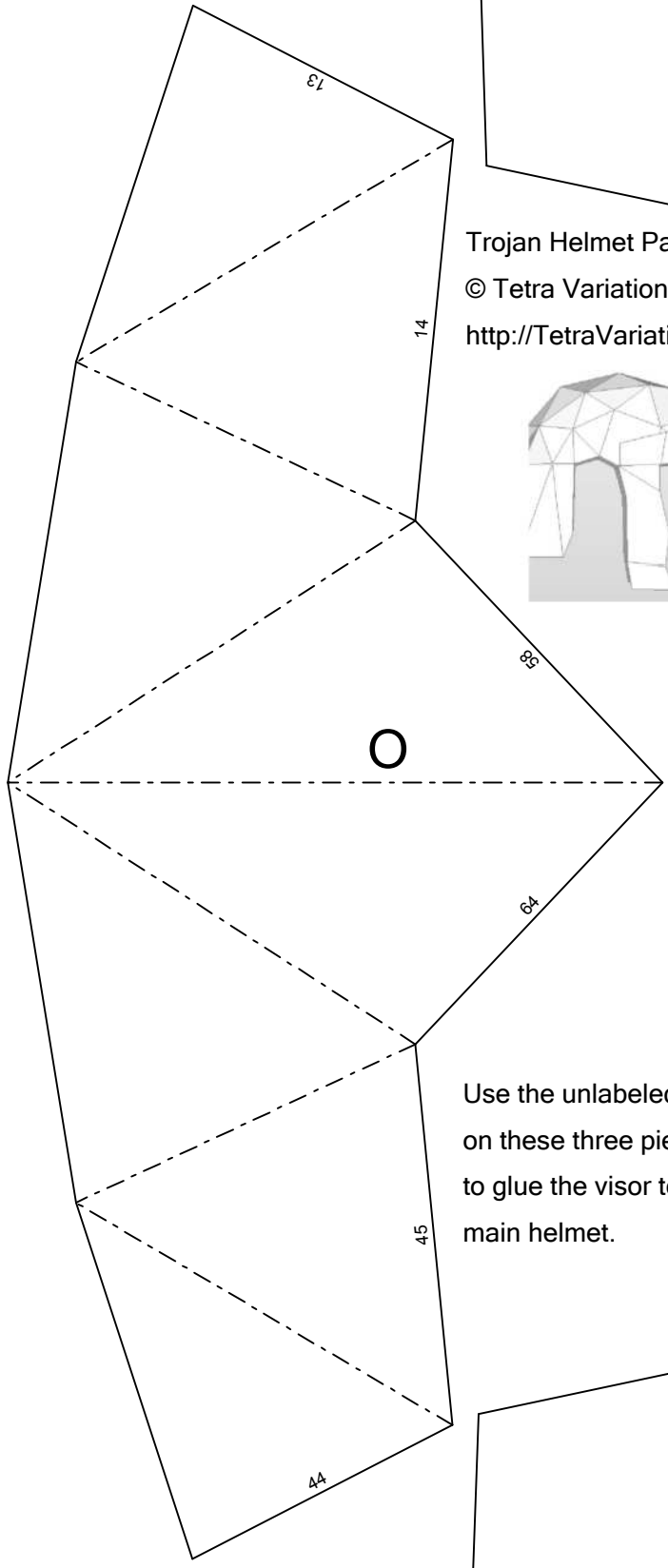
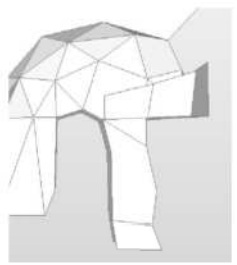


Q1

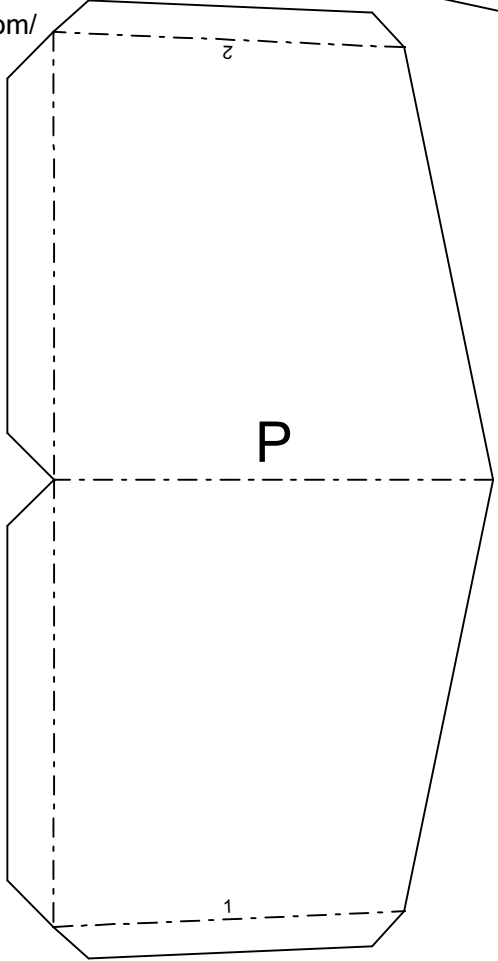
Trojan Helmet Pattern

© Tetra Variations - @TetraVariations

<http://TetraVariations.com/>

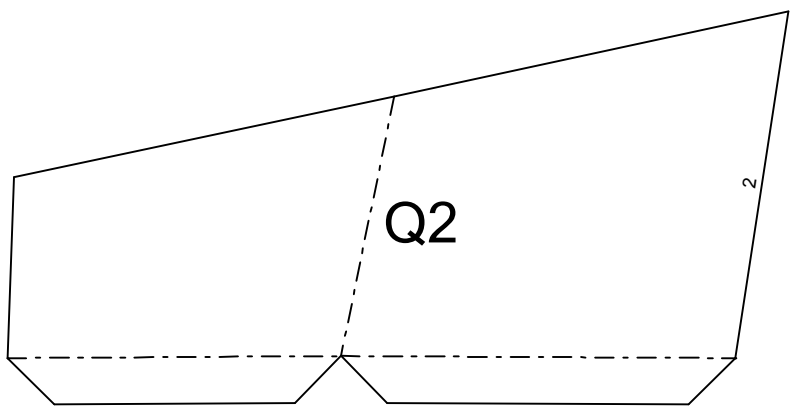


O



P

Use the unlabeled tabs on these three pieces to glue the visor to the main helmet.



Q2